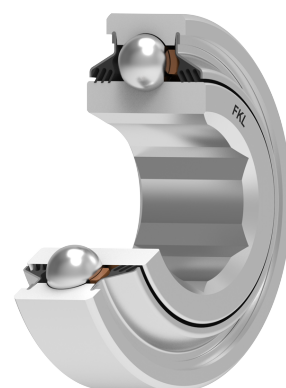
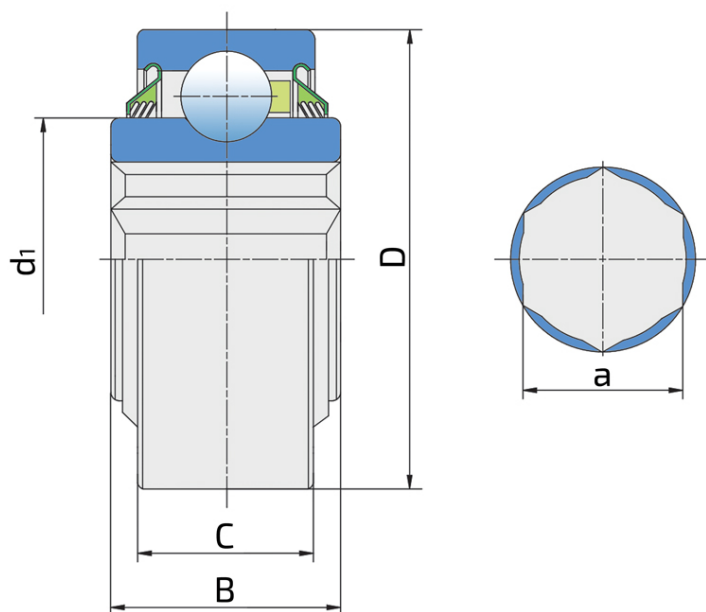
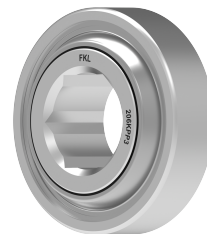


Hexagonal Bore Series With Cylindrical Outer Ring

206KPP3

Hexagonal Bore Series With Cylindrical Outer Ring



Technical Specification

| | | |
|------|---------------------------|-------------|
| D | Outside diameter | 2.4409 inch |
| D | Outside diameter | 62 mm |
| B | Width inner ring | 0.945 inch |
| B | Width inner ring | 24 mm |
| C | Width outer ring | 0.63 inch |
| C | Width outer ring | 16 mm |
| d1 | Outer diameter inner ring | 1.563 inch |
| d1 | Outer diameter inner ring | 39.7 mm |
| a | Shaft size | 1 inch |
| a | Shaft size | 25.43 mm |
| kg | Mass | 0.4 kg |
| Cdyn | Dynamic load rating | 19.5 kN |
| Co | Static load rating | 11.3 kN |
| Pu | Fatigue load limit | 0.475 kN |

Sealing

T SEAL / T SEAL (2T)

3-lip seal on the both side of the bearing, provides equal protection against contamination. Recommended for application where the possibility of contamination is the same on the both side.

