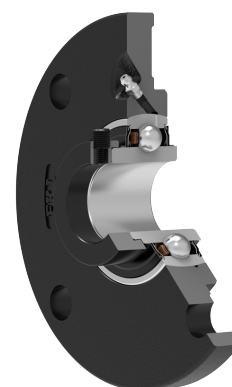
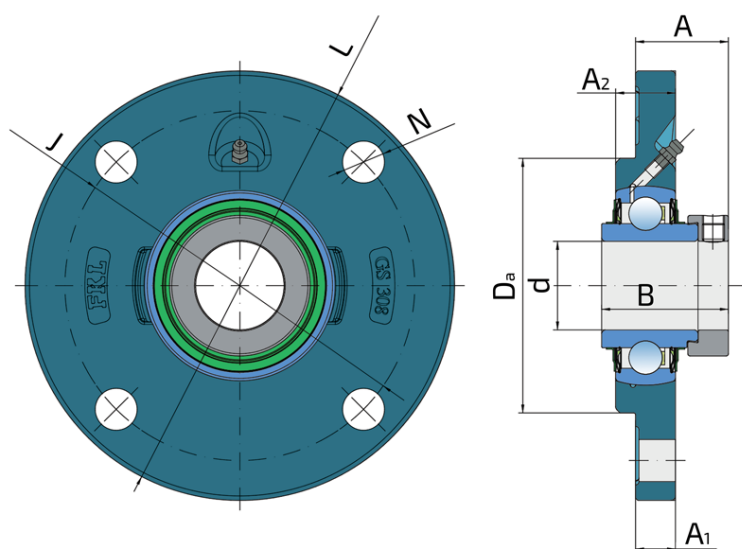


# Housing units LYGS, four-bolt flanged housing units, cast iron, centring spigot, F seals

## LYGS 308 2F

Housing units LYGS, four-bolt flanged housing units, cast iron, centring spigot, F seals  
Harvester Solution



### Technical Specification

d	Bore diameter	40 mm
Da	Centering diameter	115 mm
L	Diameter of housings	194 mm
A	Distance from the housing flange to the front of the inner ring of the bearing	41.9 mm
A1	Housing flange thickness	18 mm
A2	Height of the housing	27 mm
J	Pitch circle diameter	158 mm
N	Hole diameter	19 mm
B	Width inner ring	57.2 mm
kg	Mass	3.721 kg
Cdyn	Dynamic load rating	41 kN
Co	Static load rating	24 kN
Pu	Fatigue load limit	1.008 kN

## Sealing

### F SEAL / F SEAL (2F)

Dual sealing, protection cover placed on the inner ring protects against rough impurity particles and makes the labyrinth with the sheet part of the seal; then the sealing S type,

with the labyrinth between the sheet part and the rubber lip that conducts the contact sealing. The friction and speeds are the same as with S but has much better protection

against rough impurity particles. It is very good sealing system: the sheet part protects the seal from the soil, dust and

rough particles. At the same time makes the labyrinth with the rubber part. The rubber part provides the contact sealing that prevents the penetration of the finer impurities, water, moisture, steam etc. Suitable for heavier conditions due to better protection against foreign matters. It is used with the Y bearings (standard).

